

## EdU labeling of Trypanosome Cells and Their Kinetoplast DNA (kDNA)

Jianyang Wang\*

Department of Cell Biology, Johns Hopkins University, Baltimore, MD, USA

\*For correspondence: [jwang117@jhu.edu](mailto:jwang117@jhu.edu)

**[Abstract]** Trypanosome mitochondrial genome, known as Kinetoplast DNA (kDNA), is a massive network of interlocked DNA rings. The studies of kDNA replication and architecture are of major significance since kDNA is a valid drug target. However, DNA in procyclic trypanosomes can not be labeled with tracer concentrations of  $^3\text{[H]}$ -thymidine, possibly because they lack a high-affinity transporter for thymidine. Therefore, BrdU, a thymidine analog, has been used at high concentrations to study kDNA replication. However, the detection of BrdU with anti-BrdU antibody requires harsh conditions such as the acid or heat treatment to separate double DNA strand, which affects the ability for other antibodies to bind as well as the morphology and ability for dyes that require dsDNA to bind efficiently. Instead, EdU (5-Ethynyl-2'-deoxyuridine), a novel thymidine analog, can be used to study kDNA replication and cell proliferation with a simplified protocol. Detection of EdU is based on a click reaction, which is a copper (I) catalyzed reaction between an azide and an alkyne. This click reaction does not require DNA denaturation and it is multiplex compatible, such as other antibodies and dyes for cell cycle analyses. To visualize trypanosome replicating nuclear DNA and kDNA, EdU is added into the medium of cell culture and incubated for 0.5 h to 3 h and then detected by the following procedures.

### **Materials and Reagents**

1. Click-iT<sup>®</sup> Cell Reaction Buffer Kit (Life Technologies, Invitrogen<sup>™</sup>, catalog number: C10269)
2. EdU (Life Technologies, Invitrogen<sup>™</sup>, catalog number: A10044)
3. Alexa Fluor<sup>®</sup> 488 azide (Life Technologies, Invitrogen<sup>™</sup>, catalog number: A10266)  
OR Alexa Fluor<sup>®</sup> 594 azide (Life Technologies, Invitrogen<sup>™</sup>, catalog number: C10270)
4. 4% Paraformaldehyde (PFA) in PBS
5. Deionized water (ddH<sub>2</sub>O)
6. Poly-L-Lysine (Sigma-Aldrich, catalog number: P8920)
7. TEFLON printed slides 8-well, 6 mm diameter (Electron Microscopy Sciences)
8. Vectashield<sup>®</sup> mounting medium with DAPI (Vector Laboratories, catalog number: H-1200)
9. Nail polish
10. EdU solution (molecular weight of EdU: 252.22 g/mol) (see Recipes)

## 11. 0.1 M Glycine in 1x PBS (see Recipes)

### Equipment

1. A humid chamber (a box with moistened paper tower; can protect from light and at least 8 x 10 cm<sup>2</sup>)
2. Microscope Coverslips, 22 x 50 cm<sup>2</sup> (Fisherbrand®)
3. Centrifuge
4. 28 °C 5% CO<sub>2</sub> Cell culture incubator
5. Fluorescent microscope

### Procedure

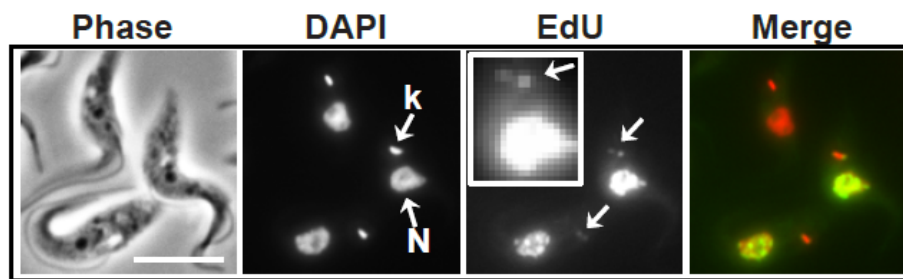
#### A. EdU labeling of trypanosome cells

##### *Notes:*

- a. This protocol has not been used for the bloodstream form of trypanosomes yet. However, it is supposed to work well for the bloodstream form of trypanosomes too.*
  - b. From step 3 to the end of the protocol, operate at room temperature (RT).*
  - c. From step 9, please protect from light by covering the box with lid or the Eppendorf tubes with foil paper. In steps 7, 8, and 10, use a 100 or 200 µl pipette to remove solution from each well.*
1. Culture procyclic trypanosomes in 10 ml SDM-79 medium supplemented with 10% FBS at 28 °C, 5% CO<sub>2</sub> incubator.
  2. Add EdU solution to cell culture at final concentration of 50 µM to 100 µM and continue to incubate at the same condition as step 1 for 30 min to 3 h as planned.
  3. Trypanosome cells are then pelleted at 700 x g for 5 min.
  4. Wash the cells with 1 ml 1x PBS once and resuspend cells in 1x PBS at around 2 x 10<sup>7</sup> cells/ml.
  5. Coat the 8-well glass slide with poly-L-lysine (0.1% w/v in H<sub>2</sub>O).
  6. Add 25 µl cell suspension onto each well in a humid chamber (see Equipment 1) and seat for 5 min.
  7. Remove cell suspension and add 40 µl 4% paraformaldehyde to fix cells for 5 min.
  8. Remove fixatives and wash cells twice with 50 µl 0.1 M Glycine for 5 min.
  9. Prepare Click-iT reaction cocktail (make cocktail fresh and keep dark).  
For 200 µl (1 slide or 8 wells, 25 µl/ well):
 

Component A: 1x TBS	176 µl
Component B: 100 mM CuSO <sub>4</sub>	4 µl

- |                              |            |
|------------------------------|------------|
| Component C: Buffer additive | 20 $\mu$ l |
| 1 mM Alexa-488-azide         | 1 $\mu$ l  |
| (OR 1 mM Alexa-594-azide     | 1 $\mu$ l) |
10. Remove the wash buffer from each well at step 8 and add 25  $\mu$ l reaction cocktail per well and incubated for 1 h at RT. Protect from light.
  11. After 1 h incubation, remove the reaction cocktail, wash twice with 50  $\mu$ l 1x PBS. Protect from light.
  12. Mount slides with Vectashield Mounting Medium with DAPI (1.5  $\mu$ g/ml), seal with nail polish and seat for 15~30 min. Protect from light.
  13. Examine by fluorescent microscopy (using 63x or 100x objective lens) (Figure 1).



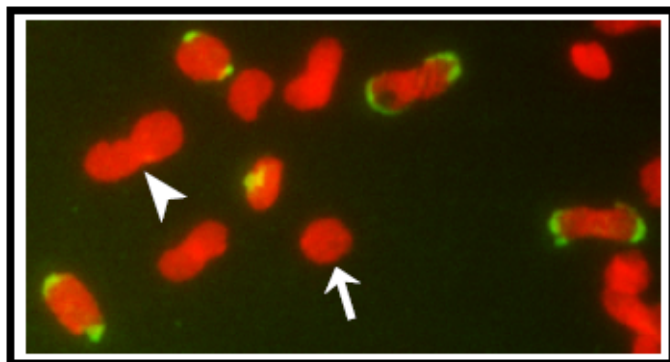
**Figure 1. EdU labeling of procyclic form of trypanosome cells.** DNA synthesis was measured by adding 100  $\mu$ M EdU to the culture medium for 1 h before harvest. Cells were then adhered to a poly-L-lysine coated 8-well slide and EdU was detected with Alexa-488-azide followed by the counterstaining of DNA and nucleus with 1.5  $\mu$ g/ml DAPI. The inset in the EdU panel is the enlarged EdU labeling image of the cell on the right in the Phase panel. N, nucleus; k, kDNA. Red, DAPI; Green, EdU. Bar, 5  $\mu$ m.

## B. EdU labeling of kDNA networks isolated from trypanosomes

### Notes:

- a. From step 3 to the end of the protocol, operate at RT (room temperature).
  - b. From step 7, please protect from light by covering the box with lid or the eppendorf tubes with foil paper.
  - c. In steps 8 and 9, please use a 100 or 200  $\mu$ l pipette to remove solution from each well.
1. Culture the procyclic trypanosomes in SDM-79 medium supplemented with 10% FBS at 28  $^{\circ}$ C, 5% CO<sub>2</sub> incubator. For kDNA isolation, prepare more than 1 x 10<sup>8</sup> cells in total.
  2. Add EdU solution to cell culture at 50  $\mu$ M to 100  $\mu$ M and continue to incubate for 30 min to 3 h as planned.
  3. Isolate kDNA networks from  $\geq 5 \times 10^7$  trypanosome cells.

4. Coat the 8-well glass slide with 1:50 diluted poly-L-lysine in ddH<sub>2</sub>O.
5. Mix 1  $\mu$ l isolated kDNA networks with 19  $\mu$ l 1x PBS (add 1x PBS in each well first and then mix kDNA with 1x PBS on the well).  
*Note: Before doing EdU labeling of isolated kDNA networks, it is suggested to examine kDNA networks abundance by DAPI staining only by following steps 5, 6, 10 and 11 (at least 15 kDNA networks in each field to continue).*
6. Allow kDNA networks seat on the slide (poly-L-lysine coated) for 30 min at room temperature in humid chamber (see Equipment 1).
7. Prepare Click-iT reaction cocktail (make cocktail fresh and keep dark).  
For 200  $\mu$ l (1 slide or 8 wells, 25  $\mu$ l/ well):  
Component A: 1x TBS                      176  $\mu$ l  
Component B: 100 mM CuSO<sub>4</sub>      4  $\mu$ l  
Component C: Buffer additive      20  $\mu$ l  
1 mM Alexa-488-azide              1  $\mu$ l  
(OR 1 mM Alexa-594-azide      1  $\mu$ l)
8. Remove kDNA and 1x PBS mixture from each well and add 25  $\mu$ l reaction cocktail per well and incubated for 1 h at RT. Protect from light.
9. After 1 h incubation, remove the reaction cocktail, wash twice with 50  $\mu$ l 1x PBS. Protect from light.
10. Mount slides with Vectashield Mounting Medium with DAPI (1.5  $\mu$ g/ml), and seal with nail polish, and seat for 15~30 min. Protect from light.
11. Examine by Fluorescent Microscopy (using 100x objective lens) (Figure 2).



**Figure 2. EdU labeling of isolated kDNA network from trypanosome cells.** Networks were isolated from EdU-labeled cells and adhered to an 8-well glass slide and incorporated EdU was then detected with Alexa-488-azide (in green) and networks were stained with 1.5  $\mu$ g/ml DAPI (in red). Arrows, a unit-sized pre-replication kDNA; Arrowhead, a double-sized post-replication kDNA.

## Recipes

1. EdU solution (molecular weight of EdU: 252.22 g/mol)  
Dissolve 12.16 mg EdU in 1 ml ddH<sub>2</sub>O for 50 mM EdU solution  
*Optional:* Aliquot as 100 µl to 200 µl each and store at - 20 °C
2. 1x PBS  
Dissolve the following in 800 ml distilled H<sub>2</sub>O  
8 g of NaCl  
0.2 g of KCl  
1.44 g of Na<sub>2</sub>HPO<sub>4</sub>  
0.24 g of KH<sub>2</sub>PO<sub>4</sub>  
Adjust pH to 7.4; then adjust volume to 1 L with additional distilled H<sub>2</sub>O. Sterilize by autoclaving.

## Acknowledgments

I thank all lab members of Paul Englund and Robert Jensen for helpful discussions. This work was supported by NIH grant AI058613.

## References

1. Wang, J., Englund, P. T. and Jensen, R. E. (2012). [TbPIF8, a \*Trypanosoma brucei\* protein related to the yeast Pif1 helicase, is essential for cell viability and mitochondrial genome maintenance](#). *Mol Microbiol* 83(3): 471-485.