

## Affinofile Assay for Identifying Macrophage-Tropic HIV-1

Sarah B. Joseph<sup>1\*</sup>, Benhur Lee<sup>2</sup> and Ronald Swanstrom<sup>2, 3\*</sup>

<sup>1</sup>Lineberger Comprehensive Cancer Center, University of North Carolina at Chapel Hill School of Medicine, Chapel Hill, USA; <sup>2</sup>Department of Microbiology, Immunology and Molecular Genetics, University of California, Los Angeles, USA; <sup>3</sup>Department of Microbiology and Immunology, University of North Carolina at Chapel Hill School of Medicine, Chapel Hill, USA

\*For correspondence: [risunc@med.unc.edu](mailto:risunc@med.unc.edu)

**[Abstract]** The ability to enter monocyte-derived macrophage (MDM) *in vitro* is commonly used to define macrophage-tropic HIV-1 despite the fact that viruses vary continuously in their ability to enter MDMs *in vitro*, and MDMs vary in their ability to support HIV-1 entry (Joseph *et al.*, 2014; Peters *et al.*, 2006). This makes it difficult to distinguish viruses that are adapted to replicating in macrophage from those that are adapted to replicating in T cells. We use the Affinofile cell line (Johnston *et al.*, 2009) to assay for macrophage tropism by capitalizing on the fact that macrophage-tropic HIV-1 has an enhanced ability to enter cells expressing low levels of CD4 (Joseph *et al.*, 2014; Peters *et al.*, 2006; Duenas-Decamp *et al.*, 2009; Dunfee *et al.*, 2006; Gorry *et al.*, 2002; Martin-Garcia *et al.*, 2006; Peters *et al.*, 2004) and Affinofile cells can be induced to express a wide range of CD4 densities (Johnston *et al.*, 2009). We induce Affinofile cells to express either high or low CD4, infect those cells with pseudotyped reporter virus, and quantify percent infectivity at low CD4 relative to infectivity at high CD4. Macrophage-tropic viruses have an enhanced ability to infect at low CD4. Using this approach we have found that macrophage-tropic strains of HIV-1 are relatively rare and that most HIV-1 variants require high levels of CD4 to enter cells, a phenotype we have referred to as R5 T cell-tropic.

### **Materials and Reagents**

1. Affinofile cells (Johnston *et al.*, 2009)
2. Luciferase Assay System (Promega Corporation, catalog number: E1501)
3. 5x Reporter Lysis Buffer (Promega Corporation, catalog number: E397A)
4. PE-conjugated anti-CD4 antibody (clone RPA-T4) (BD, catalog number: 555347)
5. PE-conjugated anti-CCR5 antibody (clone 2D7) (BD, catalog number: 555993)
6. Aqua live/dead stain (Life Technologies, catalog number: L34957)
7. Env-pseudotyped luciferase reporter virus stock (frozen and tittered)
8. Blastidicin (Life Technologies, catalog number: A11139-03)
9. FBS (Atlanta Biologicals, catalog number: S12850)

10. DMEM-H (Cellgro, catalog number: 10-013-CV)
11. 10% Buffered Formalin (Thermo Fisher Scientific, catalog number: SF100)
12. Poly-L-Lysine (Sigma-Aldrich, catalog number: P4707) (see Recipes)
13. Ponasterone A (Life Technologies, catalog number: 45-0478) (see Recipes)
14. Doxycycline (Sigma-Aldrich, catalog number: D9891) (see Recipes)
15. DMEM-F10/B (see Recipes)
16. 1x staining solution (see Recipes)
17. Fixing solution (see Recipes)

### **Equipment**

1. 96-well plate (sterile, black) (Corning, Costar®, catalog number: 3916)
2. 24 well plate
3. 37 °C, 5% CO<sub>2</sub> cell culture incubator (BSL-2)
4. Hemocytometer
5. Light microscope
6. PE-conjugated QuantiBRITE beads (BD, catalog number: 340495)
7. Incubated plate centrifuge (BSL-2)
8. Laminar flow biosafety cabinet (BSL-2)
9. Plate-reading luminometer

### **Procedure**

#### A. For high versus low CD4 comparison

##### Day 1

1. Add 50 µl of diluted Poly-L-Lysine to sterile, black 96 well plates and incubate at 37 °C for 20 min. Remove Poly-L-Lysine.
2. Treat Affinofile cells with trypsin-EDTA and harvest in DMEM-F10/B.
3. Count cells and dilute to a concentration of  $1.8 \times 10^5$  cells/ml in DMEM-F10/B.
4. Plate 100 µl of cells/well in 96 well plates.
5. Plate 0.75 ml of cells/well in 24 well plate for flow cytometry. Each well will be stained for flow cytometry. Plate enough cells to perform the necessary isotype and compensation controls.
6. Incubate cells at 37 °C overnight.

##### Day 2

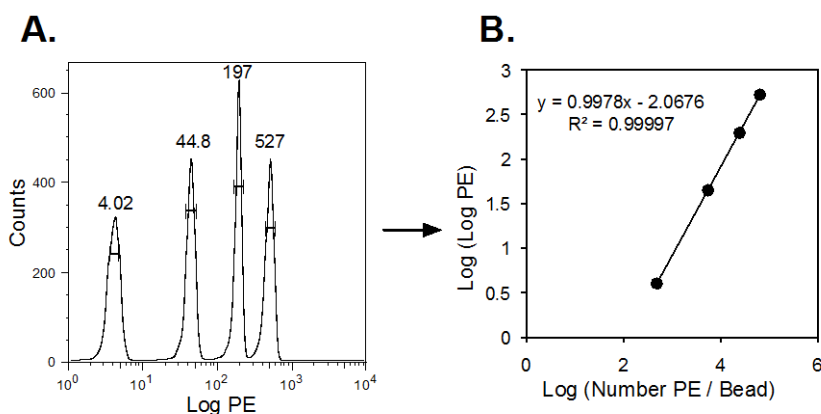
1. Prepare media for high and low CD4 induction.

- a. Dilute Doxycycline (Doxy) stock to 4x in DMEM-F10/B. A concentration of 24 ng/ml corresponds to 4x the concentration necessary for maximum CD4 induction.
  - b. Dilute Ponasterone A (Pon A) stock to 4x in DMEM-F10/B. A concentration of 20  $\mu$ M corresponds to 4x the concentration necessary for maximum CCR5 induction.
  - c. Low CD4 induction medium (Low CD4/High CCR5): Mix equal volumes of 4x Pon A and DMEM-F10/B (=2x Pon A and 0x Doxy).
  - d. High CD4 induction medium (High CD4/High CCR5): Mix equal volumes of 4x Pon A and 4x Doxy (=2x Pon A and 2x Doxy).
2. Induce cells for infection.
    - a. Remove 50  $\mu$ l of medium from each well of the 96-well plate.
    - b. For each virus being tested, add 50  $\mu$ l of low CD4 induction medium to 3 wells (=1x Pon A and 0x Doxy) and 50  $\mu$ l of High CD4 induction medium to 3 wells (=1x Pon A and 1x Doxy).
    - c. Incubate cells at 37  $^{\circ}$ C.
  3. Induce cells for flow cytometry.
    - a. Remove all medium from the 24 well plate, replace with 750  $\mu$ l of warm DMEM-F10/B and 250  $\mu$ l of either 4x Doxy or 4x Pon A (=1x desired amount of Pon A or Doxy).
    - b. Incubate cells at 37  $^{\circ}$ C.

### Day 3

1. Infect cells 18-24 h after adding drugs (Pon A and Doxy).
  - a. Remove induction medium from wells and immediately replace with 50  $\mu$ l of warm DMEM-D10/B.
  - b. Warm plate centrifuge to 37  $^{\circ}$ C.
  - c. Thaw pseudovirus stock and dilute in DMEM-D10/B so that 50  $\mu$ l of diluted virus produces a desired signal when titered on Affinofile cells expressing maximum CD4 and CCR5. This is determined by pre-titering the virus to ensure the amount of virus added is within the linear dose-response curve for the readout (in this case luciferase) and many fold above the assay background. As an additional control, include a dilution curve of a high titer virus to ensure all signals are within the linear range.
  - d. Add 50  $\mu$ l of diluted virus to each well of a 96-well plate (3 High CD4 wells and 3 Low CD4 wells per virus).
  - e. Centrifuge plates at 2,000 rpm (849 x g) for 2 h at 37  $^{\circ}$ C (spinoculation; O'Doherty *et al.*, 2000).
  - f. Incubate cells at 37  $^{\circ}$ C for 48 h.
2. Prepare cells for flow cytometry.

- a. Remove medium from a well of a 24 well plate, then use 1 ml of cold PBS to harvest the cells from that well and store the cells in eppendorf tubes on ice until all wells are harvested.
- b. Centrifuge the harvested cells in a table top microcentrifuge at 4 °C at 2,600 rpm for 10 min.
- c. While centrifuging, make staining solutions (Recipe 5)..
- d. Resuspend the cells in 50 µl of staining solution and stain at room temperature, in the dark, for 60 min.
- e. Add, with gentle mixing, 1 ml of fresh fixing solution (Recipe 6).
- f. Centrifuge in cold room at 2,600 rpm for 10 min, dispose of supernatant.
- g. Resuspend cells in 1 ml PBS.
- h. Centrifuge in cold room at 2,600 rpm for 10 min.
- i. Resuspend cells in 300 µl PBS.
- j. Store in the dark at 4 °C until ready to analyze.
- k. Analyze cells and QuantiBRITE beads using flow cytometer equipped with a 405 nm laser and a filter that measures emissions at approximately 526 nm and a 488 nm laser with a filter that measures emissions at approximately 578 nm.
- l. Use Quantibrite beads, with their four known levels of PE, to determine the relationship between mean fluorescence and number of PE molecules (Figure 1). This relationship can be used to translate the PE fluorescence of stained cells into mean number of CD4 or CCR5 antibody binding sites (ABS) per cell. This method requires that cells be stained with saturating levels of antibody and assumes that each antibody is conjugated to a single PE molecule.



**Figure 1. QuantiBRITE beads are used to quantify the relationship between PE fluorescence and number of PE molecules attached to a bead/cell.** A) QuantiBRITE beads are analyzed by flow cytometry to calculate the mean, log PE fluorescence of the four bead populations, each conjugated to a different, known number of PE molecules. B)

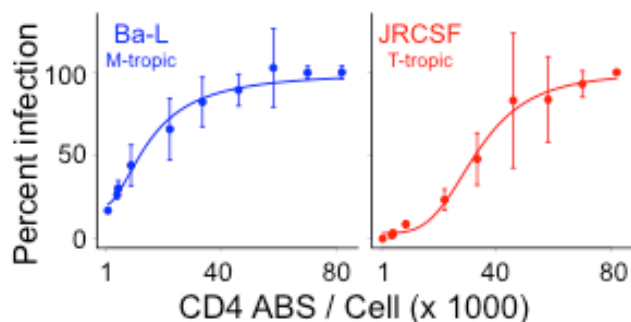
The relationship between log (PE molecules/bead) and log (log PE) is then determined. This relationship can then be used to translate the mean PE fluorescence of stained cells into the mean number of CD4 or CCR5 antibody binding sites (ABS) per cell.

Day 5

1. Harvest infected cells 48 h after infection.
  - a. Remove medium from wells.
  - b. Gently rinse 2x with warm PBS, discard PBS after each wash.
  - c. Add 50  $\mu$ l of 1x Reporter Lysis Buffer and incubate at room temperature for 15 min.
  - d. Seal plates with aluminum foil covers and freeze at -80 °C for at least 2 h.
  - e. Thaw plates and Luciferase Assay System reagent at room temperature.
  - f. Prepare Luciferase Assay reagents following the manufacturer's protocol, and read plate using a plate-reading luminometer.
  - g. Calculate percent infectivity at low CD4 relative to infectivity at high CD4 for each individual virus.

B. For continuous CD4 comparison

Macrophage-tropism can also be assessed by infecting Affinofile cells expressing a wide range of CD4 densities (Joseph *et al.*, 2014). CD4 usage curves reveal that, relative to T cell-tropic viruses, macrophage-tropic viruses are significantly better at infecting cells expressing low levels of CD4, reach 50% infectivity at lower CD4 levels (CD4 ED50) and often approach a plateau level of infectivity at a lower CD4 density (Figure 2; Joseph *et al.*, 2014). This procedure is identical to the 'Procedure for High Versus Low CD4 Comparison' (part A above) except that cells are induced to express 10 levels of CD4 and 30 wells of a 96-well plate are needed to test each virus (10 CD4 levels x 3 replicates per level).



**Figure 2. Dose-response curves for infectivity of a macrophage-tropic virus (Ba-L) and a T cell-tropic viruses (JRCSF) to Affinofile cells expressing various densities of CD4.**

The sensitivity of pseudotyped viruses to CD4 levels was assessed by measuring their ability to infect Affinofile cells expressing 10 CD4 levels (1,425, 4,590, 4,981, 9,374, 22,667, 33,842, 46,204, 58,153, 69,897, and 81,649 CD4 ABS per cell), with CCR5 fully induced. In this

assay, the vast majority of blood-derived viruses have an infectivity profile similar to that of JRCSF (Ping *et al.*, 2013).

## Day 2

1. Prepare media for continuous CD4 comparison.
  - a. Dilute Doxycycline stock to 24 ng/ml in DMEM-F10/B.
  - b. Serially dilute Doxycycline to the following concentrations: 6, 4, 2.8, 2, 1.2, 0.8, 0.4, 0.28 ng/ml.
  - c. Dilute Ponasterone A stock to 20  $\mu$ M in DMEM-F10/B.
  - d. Induction medium (10 levels of Doxycycline and 1 high level of Pon A): Mix equal volumes of 4x Doxycycline and 4x Ponasterone A (Table 1).

**Table 1. Dilutions of Doxycycline and Ponasterone A to induce ten levels of CD4 expression and a single, high level of CCR5 expression**

4x Doxycycline (ng/ml)	4x Ponasterone A ( $\mu$ M)	1x Final Doxycycline concentration	1x Final Ponasterone A concentration
24	20	6	5
6	20	1.5	5
4	20	1	5
2.8	20	0.7	5
2	20	0.5	5
1.2	20	0.3	5
0.8	20	0.2	5
0.4	20	0.1	5
0.28	20	0.07	5
0	20	0	5

2. Induce cells for infection.
  - a. Remove 50  $\mu$ l of media from each well of the 96-well plate.
  - b. For each virus being tested, at each Doxycycline level, add 50  $\mu$ l of each induction medium to 3 wells (10 induction levels x 3 replicates = 30 wells / virus).
  - c. Incubate cells at 37  $^{\circ}$ C.
3. Induce cells for flow cytometry
  - a. Remove all medium from the 24 well plate, replace with 750  $\mu$ l of warm DMEM-F10/B and 250  $\mu$ l of either 4x Doxy or 4x Pon A (=1x desired amount of Pon A or Doxy).
  - b. Incubate cells at 37  $^{\circ}$ C.

Days 3 and 5 are the same as described in 'Procedure for High Versus Low CD4 Comparison' (part A above).

### **Recipes**

1. Poly-L-Lysine (0.1 mg/ml)  
Diluted  $10^{-1}$  in sterile PBS (10  $\mu\text{g/ml}$ ) and stored at 4 °C
2. Ponasterone A  
Diluted in 50% ethanol to 1 mM and stored in 100  $\mu\text{l}$  aliquots at -20 °C
3. Doxycycline  
Diluted in sterile water to 10 mg/ml and frozen in 20  $\mu\text{l}$  aliquots at -20 °C (do not freeze-thaw)
4. DMEM-F10/B  
450 ml Cellgro DMEM-H  
2.5 ml of blasticidin (final conc = 50 mg/ml, do not freeze/thaw blasticidin)  
50 ml of dialyzed FBS (final = 10%)  
Stored at 4 °C
5. 1x staining solution  
3  $\mu\text{l}$  of antibody (anti-CD4, anti-CCR5 or isotype controls)  
2  $\mu\text{l}$  of aqua live/dead stain  
45  $\mu\text{l}$  of PBS  
1% FBS
6. Fixing solution  
200  $\mu\text{l}$  of 10% formalin  
800  $\mu\text{l}$  H<sub>2</sub>O

### **Acknowledgement**

We would like to thank Kathryn T. Arrildt for helpful comments that improved this protocol. This work was funded by the National Institutes of Health grant R37 AI44667 to RS.

### **References**

1. Dunfee, R. L., Thomas, E. R., Gorry, P. R., Wang, J., Taylor, J., Kunstman, K., Wolinsky, S. M. and Gabuzda, D. (2006). [The HIV Env variant N283 enhances macrophage tropism and is associated with brain infection and dementia.](#) *Proc Natl Acad Sci U S A* 103(41): 15160-15165.

2. Duenas-Decamp, M. J., Peters, P. J., Burton, D. and Clapham, P. R. (2009). [Determinants flanking the CD4 binding loop modulate macrophage tropism of human immunodeficiency virus type 1 R5 envelopes](#). *J Virol* 83(6): 2575-2583.
3. Gorry, P. R., Taylor, J., Holm, G. H., Mehle, A., Morgan, T., Cayabyab, M., Farzan, M., Wang, H., Bell, J. E., Kunstman, K., Moore, J. P., Wolinsky, S. M. and Gabuzda, D. (2002). [Increased CCR5 affinity and reduced CCR5/CD4 dependence of a neurovirulent primary human immunodeficiency virus type 1 isolate](#). *J Virol* 76(12): 6277-6292.
4. Johnston, S. H., Lobritz, M. A., Nguyen, S., Lassen, K., Delair, S., Posta, F., Bryson, Y. J., Arts, E. J., Chou, T. and Lee, B. (2009). [A quantitative affinity-profiling system that reveals distinct CD4/CCR5 usage patterns among human immunodeficiency virus type 1 and simian immunodeficiency virus strains](#). *J Virol* 83(21): 11016-11026.
5. Joseph, S. B., Arrildt, K. T., Swanstrom, A. E., Schnell, G., Lee, B., Hoxie, J. A. and Swanstrom, R. (2014). [Quantification of Entry Phenotypes of Macrophage-Tropic HIV-1 across a Wide Range of CD4 Densities](#). *J Virol* 88(4): 1858-1869.
6. O'Doherty, U., Swiggard, W. J. and Malim, M. H. (2000). [Human immunodeficiency virus type 1 spinoculation enhances infection through virus binding](#). *J Virol* 74(21): 10074-10080.
7. Peters, P. J., Bhattacharya, J., Hibbitts, S., Dittmar, M. T., Simmons, G., Bell, J., Simmonds, P. and Clapham, P. R. (2004). [Biological analysis of human immunodeficiency virus type 1 R5 envelopes amplified from brain and lymph node tissues of AIDS patients with neuropathology reveals two distinct tropism phenotypes and identifies envelopes in the brain that confer an enhanced tropism and fusigenicity for macrophages](#). *J Virol* 78(13): 6915-6926.
8. Peters, P. J., Sullivan, W. M., Duenas-Decamp, M. J., Bhattacharya, J., Ankghuambom, C., Brown, R., Luzuriaga, K., Bell, J., Simmonds, P., Ball, J. and Clapham, P. R. (2006). [Non-macrophage-tropic human immunodeficiency virus type 1 R5 envelopes predominate in blood, lymph nodes, and semen: implications for transmission and pathogenesis](#). *J Virol* 80(13): 6324-6332.
9. Ping, L. H., Joseph, S. B., Anderson, J. A., Abrahams, M. R., Salazar-Gonzalez, J. F., Kincer, L. P., Treurnicht, F. K., Arney, L., Ojeda, S., Zhang, M., Keys, J., Potter, E. L., Chu, H., Moore, P., Salazar, M. G., Iyer, S., Jabara, C., Kirchherr, J., Mapanje, C., Ngandu, N., Seoighe, C., Hoffman, I., Gao, F., Tang, Y., Labranche, C., Lee, B., Saville, A., Vermeulen, M., Fiscus, S., Morris, L., Karim, S. A., Haynes, B. F., Shaw, G. M., Korber, B. T., Hahn, B. H., Cohen, M. S., Montefiori, D., Williamson, C., Swanstrom, R., Study, C. A. I. and the Center for, H. I. V. A. V. I. C. (2013). [Comparison of viral Env proteins from acute and chronic infections with subtype C human immunodeficiency virus](#)



- [type 1 identifies differences in glycosylation and CCR5 utilization and suggests a new strategy for immunogen design.](#) *J Virol* 87(13): 7218-7233.
10. Martin-Garcia, J., Cao, W., Varela-Rohena, A., Plassmeyer, M. L. and Gonzalez-Scarano, F. (2006). [HIV-1 tropism for the central nervous system: Brain-derived envelope glycoproteins with lower CD4 dependence and reduced sensitivity to a fusion inhibitor.](#) *Virology* 346(1): 169-179.